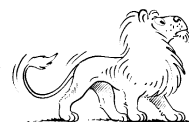
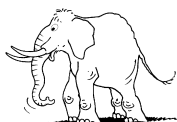
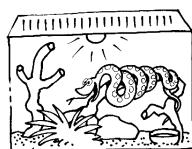
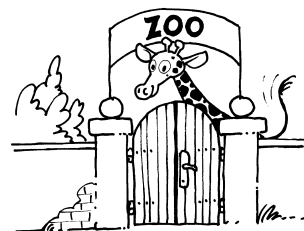
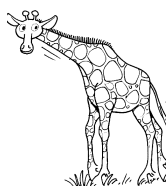
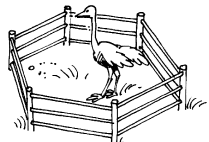


V živalskem vrtu



lev žirafa opica zebra slon skrbnik živali živalski vrt ograda terarij bazen



Uredi besede.

lve

žifara

oopic

zbera

snol

skrknib vižali

vilažski trv

groada

tarerij

bezan



Dopolni in preberi.

L _ _ _ je kralj živali.

Ž _ _ _ _ _ je zelo velika.

O _ _ _ _ ima rada banane.

Z _ _ _ _ je črno-bela.

S _ _ _ ima dolg rilec.

S _ _ _ _ _ ž _ _ _ _ _ krmi živali.

Družina gre v ž _ _ _ _ _ v _ _ _ .

O _ _ _ _ _ je železna.

V t _ _ _ _ _ so kače.

V b _ _ _ _ _ so ribe.